

A large, bold, red number '4' with a thick stroke and rounded corners, positioned on the right side of the page. To its left, a grey, curved, abstract shape resembling a stylized 'M' or a checkmark is partially visible.

Metrolog

Upscale your quality inspection
with MetrologX4

**High precision & universal
metrology measurements solution**

- Quality Lab
- Inspection Assurance

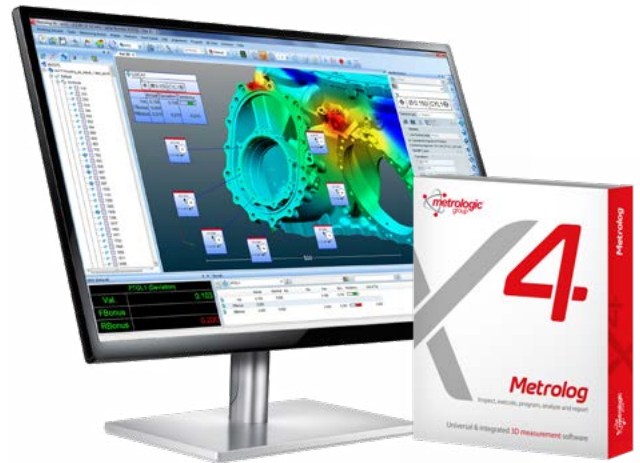


About the company

Optimize your quality processes, measure more efficiently, maximize your investments

Metrologic Group has built a solid reputation for providing companies of all sizes with the best 3D control software in the market through a combination of cutting-edge technology driven products & solutions, together with outstanding levels of customer service.

The latest Metrolog X4 software is our most innovative & advanced measuring solution yet, resulting from 35 years of expertise and extensive R&D in the metrology industry. Companies in various sectors such as automotive, aerospace, tool manufacturing and mould making, machine building, energy and medicine have trusted us with their metrology needs, outperforming our competitors in all aspects.



An independent yet compatible solution

Metrolog X4 Core focuses on metrology in a stabilized environment. The software is compatible with CMMs of various configurations, portable devices such as arms or even trackers.



Large Scale Metrology
Uncertainty Bundle



Portable Metrology
Multi-devices



Point Cloud
Acquisition & Inspection



CMM Retrofits
Services & Calibration



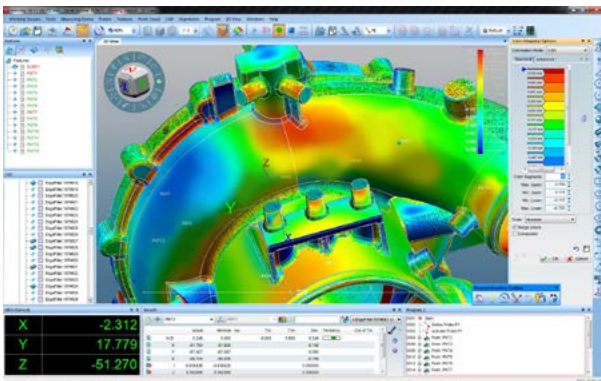
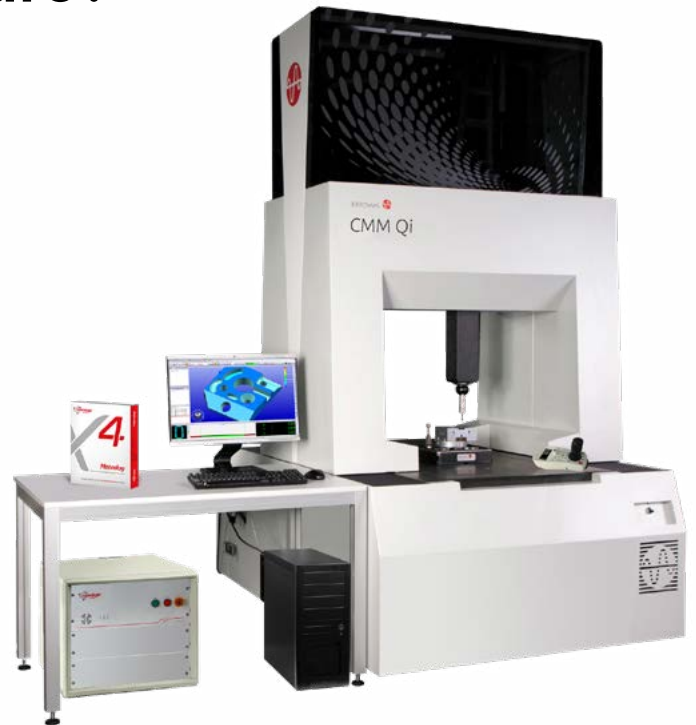
GD&T Reporting
Offline Analysis

Why changing your measurement software?

Your current software solution:

- Does not update regularly?
- Is only compatible with an obsolete computer system?
- Struggles when it needs to open heavy or complex CAD files?
- Does not provide the correct analysis and understanding of results?
- Does not analyse geometric tolerances (GD&T)?
- Takes up too much operators time with program creation?
- Provides limited flexibility or customisation in the design and management of reports?
- Your inspection department is constantly overloaded and under-productive?

Metrolog X4 will lift all these limitations. Metrolog X4 is a stable solution with worldwide recognition that will deliver outstanding cost-effective and time-saving measuring capabilities.



An enhanced interface for a smooth end-user experience

- Fully customizable user-friendly graphical interface to suit the needs of the operator, machine types and measurement types.
- New manual probing wizard.
- Automatic view orientation during acquisition.
- Multiple information windows (position and results).
- Software readily available in 18 languages switchable on the fly.



HIGH PERFORMANCE

Ability to increase the file size (CAD files, point cloud...), new 64 bits architecture...



POINT CLOUD ACCURACY

Native 3D Inspection software bringing more precision to non-contact measuring systems



HIGH COMPATIBILITY

Compatible with all portable devices, arms, laser trackers & P.O.D. systems...



OPTIMAL INTERFACE

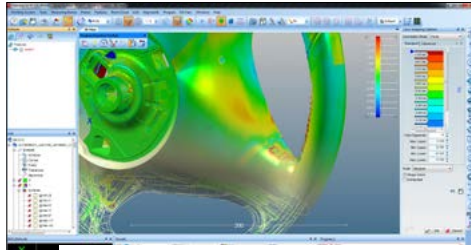
Fully customizable graphical user interface, new manual probing assistant.



ENHANCED ANALYSIS

All GD&T Tolerances supported: ANSI & ISO, Smart data shaping quality inspection and manufacturing...

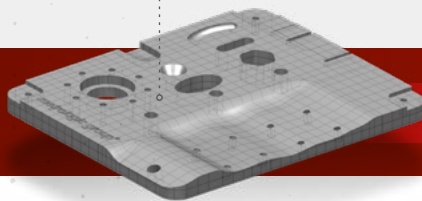
Inspection made Easy



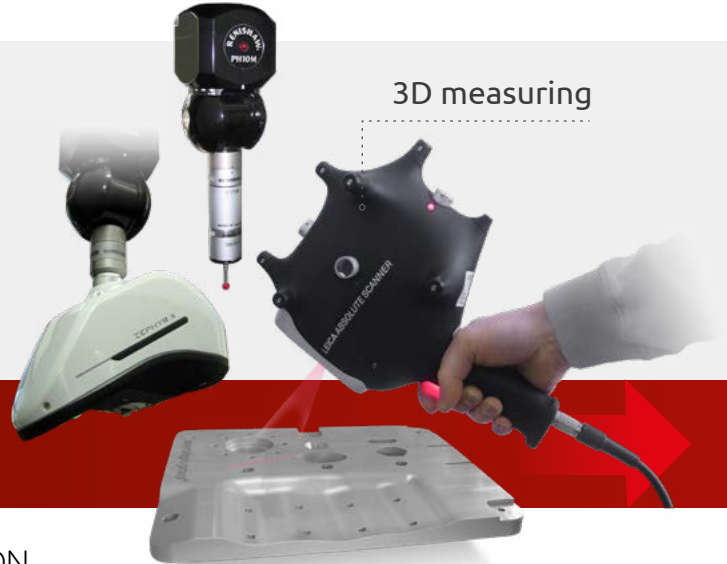
Maximum performance in the point clouds analysis

- Metrolog X4 is designed to process and analyse the largest and most dense point clouds.
- Metrolog X4 integrates the latest technology required for efficient optical measurement functions, ensuring that you have the best tool whatever the device used.
- Cloud comparison with CAD (Color Mapping).
- Element extraction and automated GD&T.
- Intuitive treatment of Flush and Gap.
- Measurement with compensation for material thickness.
- Part quality estimation according to the surface mm^2 (Area calculation).

CAD data



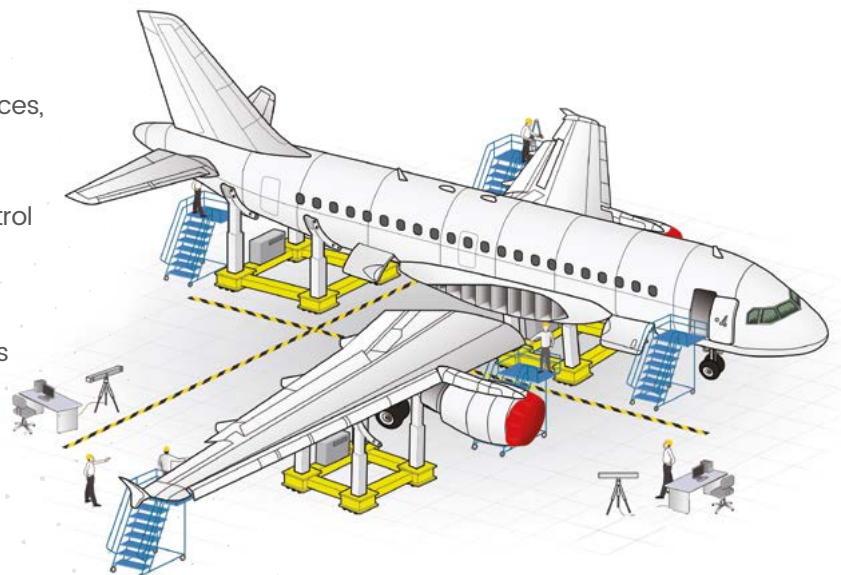
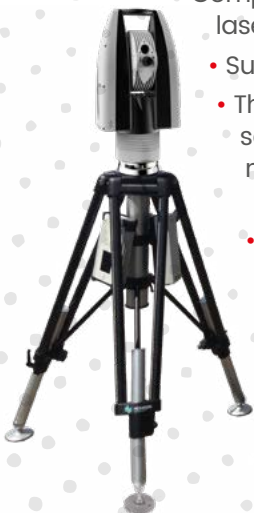
3D measuring



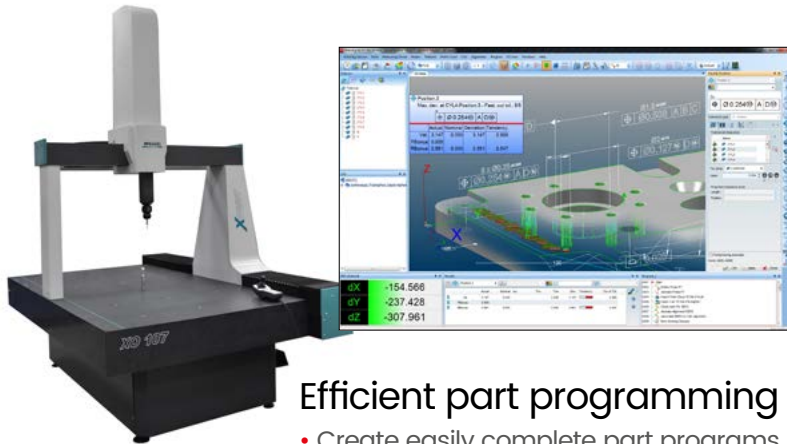
► ACQUISITION

Large scale metrology with Metrolog

- Compatible with all large measuring devices, laser tracker & mobile optical systems.
- Supports all brands and models.
- The Multi-connections mode can control several devices to simultaneously measure with reference to all of the measurement results (Bundle).
- Takes into account the uncertainties of the instruments and scale factor (temperature variations).
- Tracking and management of raw data.



Connect and inspect!



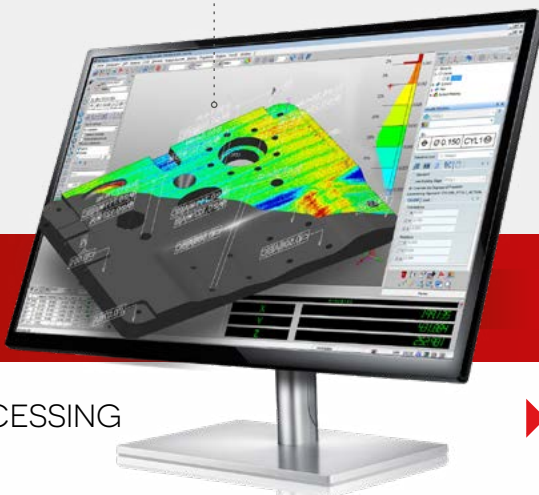
Efficient part programming

- Create easily complete part programs
- Online or offline teach-in available
- Full process planning files integrations
- Operator oriented instructions for robust shop floor execution

Simplifies complex GD&T analysis

- Metrolog X4 has a new geometric and dimensional tolerances processing engine for handling the most complex cases in record time.
- Geometric tolerance definition facilitated.
- «Expert» system ensuring the correct evaluation methodology and results.
- Total support for the tolerance evaluation in compliance with the given standard.
- Support for ANSI and ISO standards.
- Certified and recognised solution by the PTB and NIST organisations.

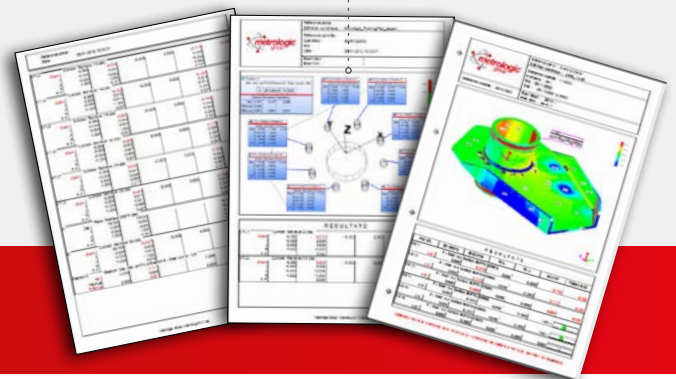
Embedded treatment in X4



▶ PROCESSING

▶ ANALYSIS

Graphic reports



▶ REPORTING

High performance: large data set (CAD, point clouds, ...)

No more delays and bottlenecks with large volumes of data. The coming years will see exploding amounts of data and processing, whether CAD files or measured point clouds from optical sensors.

Metrolog X4 64-bit architecture uses and optimises all available memory, always pushing the envelope.

Unparalleled performance and unparalleled ease of use.

The software architecture provides two key benefits:

- Import and manipulate large size CAD files.
- Import or acquire large point clouds.

Report editor: The best in class

- Powerful report editor allows complete and easy customisation.
- Simple and user-friendly interface.
- Create your own report templates adapted to your customer requirements.
- Customise any type of output: assistant, status editor, direct export from the library, etc.
- Export available in many standard formats such as .XLS, .CSV, .PDF...

Universal CMM Controller Retrofit

«Don't hesitate to upgrade your CMM!
You'll increase its performances at a
very competitive price.»

CMM hardware upgrade and software updates have become increasingly popular over the past few years, restoring full performance to a measuring tool whose electronic and software are outdated for considerably less money than changing the whole measuring machine, with the possibility to integrate the latest new probing and scanning technologies.



Metrologic universal DCC controller upgrade

Metrologic Group's own range of digital controllers provide enhanced calculation time, machine speed and an overall smoother machine motion.

- Fast: capable of high speed contact-scanning
- State-of-the-art developed for optical laser scanning probes
- Universal: fully compatible with all type and brand of CMM
- Ergonomic: Specific keyboards developed especially for Metrologic software use Wireless Bluetooth capable Keyboards available
- Reliable: use of proven technologies combined with 30 years of experience
- Easy: Metrotune software for quick and easy installation of the measurement results (Bundle).



Metrologic Manual Counting Box upgrade

- 3 Axis Counting box for any type of manual CMM
- Any type of encoders
- Connection to PC via USB
- Input for touch trigger 3D probe
- Power supply included
- Fully compatible with our 3D inspection software



Metrologic Operator oriented Joystick and Keyboards

- Among all the improvements made to this new single stick keyboard, here are some of the main advantages:
- Large color LCD screen: better contrast and brightness
 - 16 programmable functions keys
 - New handling for menus and quick access for PH10 motorized head
 - Self-test functions

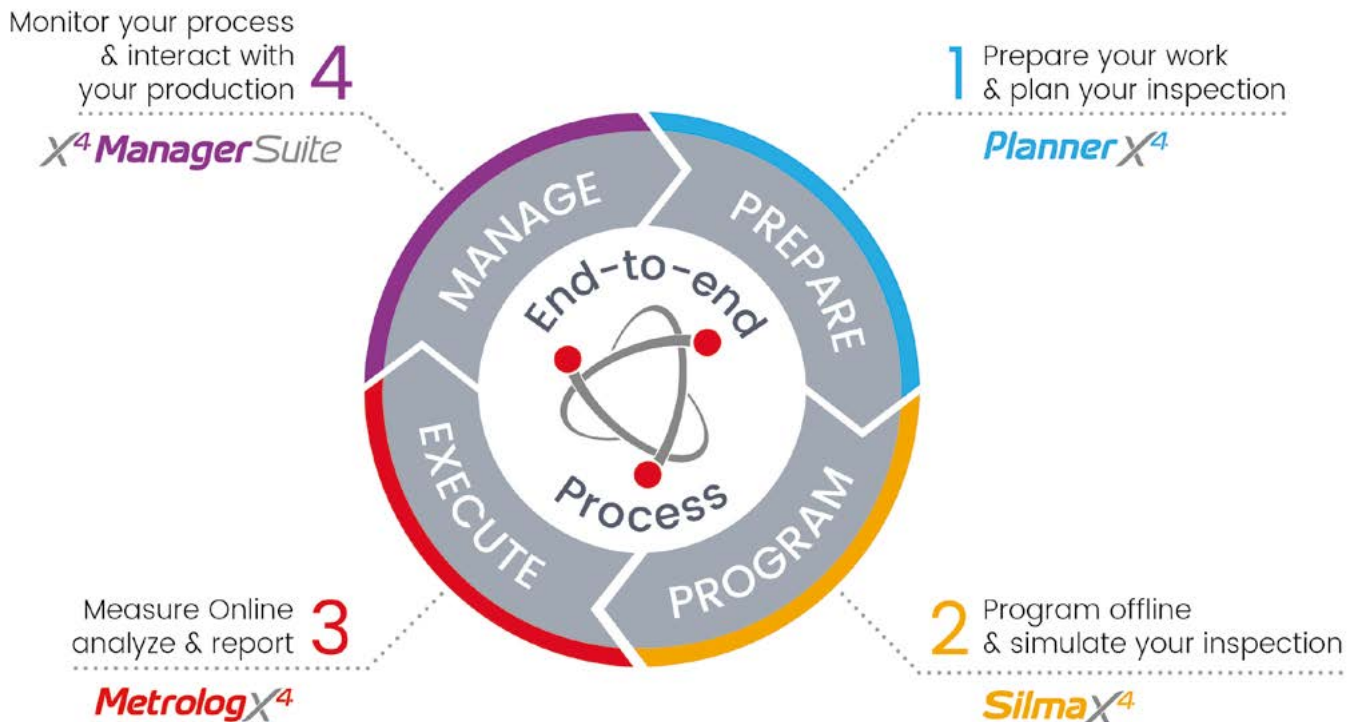
Scale your quality inspection fast and make sense of your 3D measurements

Your End-to-End 3D inspection solution to streamline your workflow.

Take your quality inspection to the next level with the combination of both simulation and measuring software. Gain peace of mind with Silma for preparing and programming before you inspect and Metrolog X4 for on-machine execution and analysis. The most comprehensive and universal 3D measurement software solution on the market.

Let us show you how it works

Contact us for a free onsite demo. Using your own part and measuring device, we'll demonstrate specifically how we can help make your processes more efficient, cost-effective and easier.



ANY DATA | ANY TECHNOLOGY | ANY APPLICATION