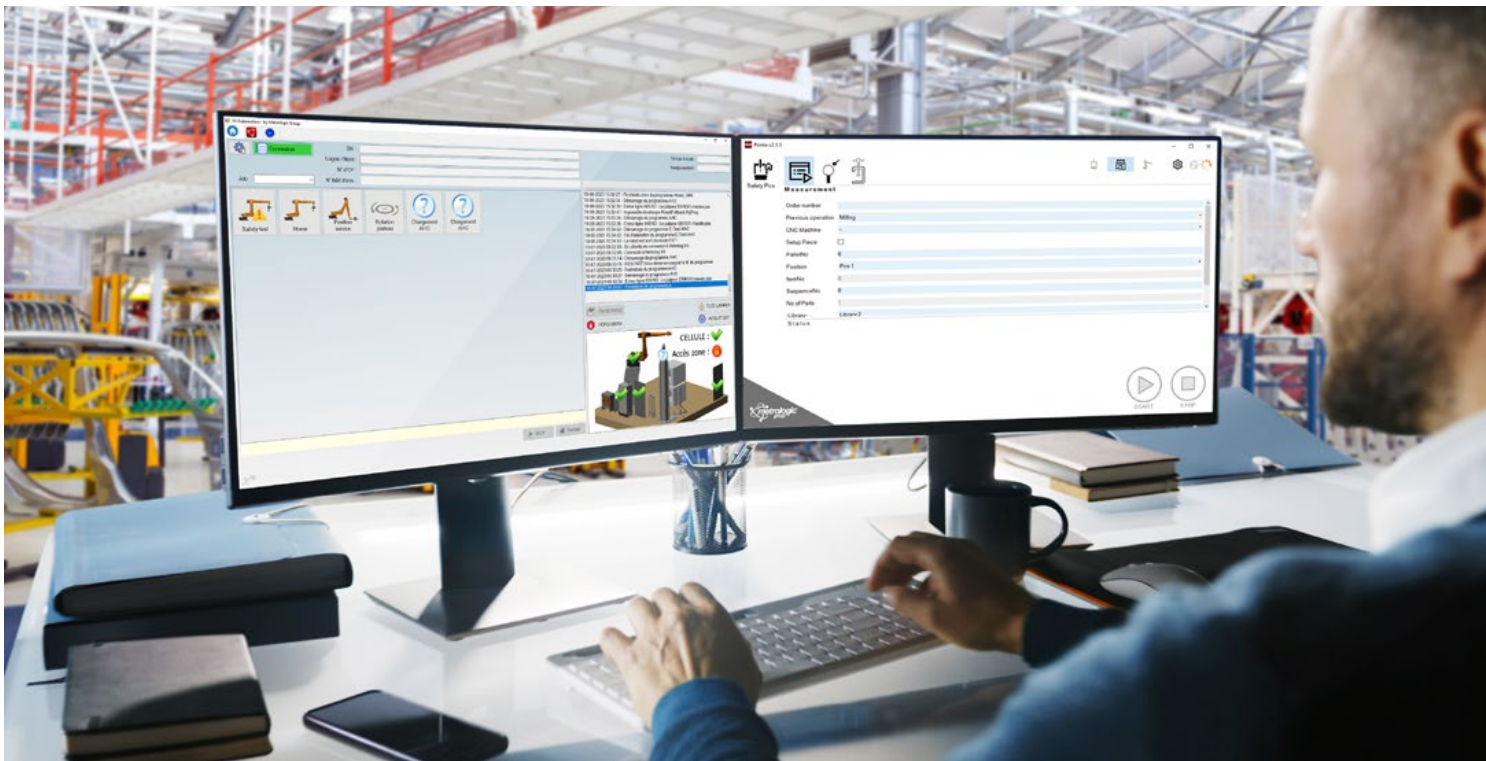


X⁴ i-Supervision

Drive your 3D metrology software remotely



Simplified and centralized control of Metrolog X4 measurement devices from a single workstation

X4 i-Supervision is a Metrolog X4 capability that allows you to control one or more machines running with Metrolog X4 centrally from a single workstation. This high value-added solution allows to sequence the different assembly steps remotely in order to gain flexibility. The interaction with Metrolog X4 via a single internal tool integrated with the company's own supervision system offers a more efficient and automated process management.

The functionality provided by the X4 i-Supervision module, combined with one or more programs and the flexibility offered by our programming engine and the interaction of X4 with other systems, provides an infinite combination of possibilities.

Indeed, driven by the Metrolog X4 programming engine, the X4 i-Supervision module and its remote control offers a super powerful combination to considerably improve your measurement processes.





Anywhere

Take control of X4 software remotely, even away from your computer.



Customization

Ability to create your own application and to tailor it to your measurement needs.



Traceability

Possibility of integrating with other management software for more efficient supervision and better traceability.



Automation

Integration of the application into the customer's process to automate the line and gain autonomy.



Simple

Simplified use allowing to launch programs quickly and easily.



Scalable

Easily supervises 1 to 1000 devices with the same ease.

Compatible with any measurement devices

As a function of Metrolog Group's universal X4 software suite, the X4 i-Supervision application is available on over 120 devices, robot and all available system already compatible with Metrolog X4 today.



Available features

- 1/ **Remote control and monitoring:** program opening, program start, pause, restart, close.
- 2/ **On demand data reception:** retrieve program status and live measurement results.
- 3/ **Exchange/send variables.**

Via a TCP-IP connection, specific commands can be sent to Metrolog X4 for action and information feedback, in order to supervise and control the measurement cell.

Various possible scenarios

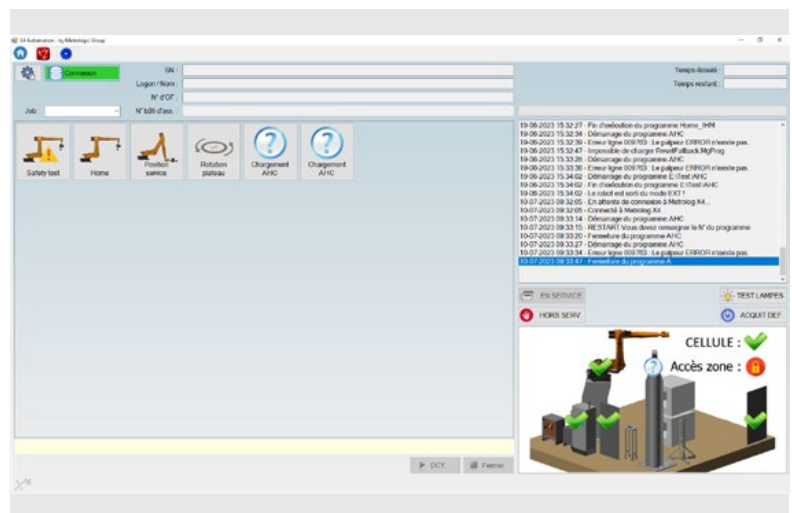
X4 i-Supervision supports a wide range of scenarios:

- CMMs,
- Robotics,
- and many others.

The application is implemented within an automated cell that is remotely controlled, or on the same workstation by a specific application such as a PLC, a software or a control application.

X4 i-Supervision enables the user to sequence X4 with other functions/ capabilities of an automated cell.

For integrators using PLCs, simplified OPC (UA/ DA) control is also possible via predefined Tags.



An application designed to adapt to different measurement needs

In order to have a tailor-made solution adapted to your expectations, you have the possibility to make your own application. All the necessary documentation is available on the Metrolog Group extranet.

Alternatively, we can do it for you. In this case, please get in touch with your sales contact.

Ask for your free, personalized demonstration on our website, contact section: www.metrolog.group