



# CMM Retrofit

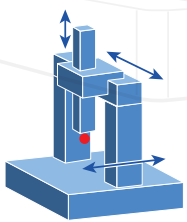
Restore your CMM performance, enhance software performance and engage in smart industry

## Retrofit possible operations

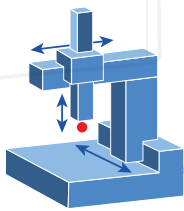
Offering a RETROFIT to your CNC CMM regenerates both its hardware and software systems. It restores its original performance and allows addition of a whole range of functionalities: connecting new types of sensors, increasing overall precision and productivity, reducing measuring cycle time.

Combined with our Metrolog X4 software, hardware retrofit is the best alternative to a costly brand new CMM. It optimizes your investment thus reducing production costs, enhancing significantly CNC's performances and profitability.

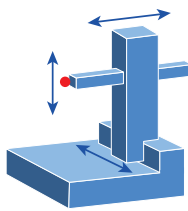
Get access to cutting edge technologies on your CMM : advanced programming solution, CAD files import with integrated PMI, GD&T management based on ISO or ASME standards, ...



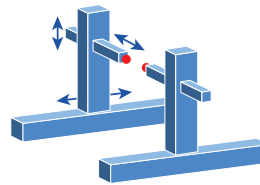
Bridge CMM



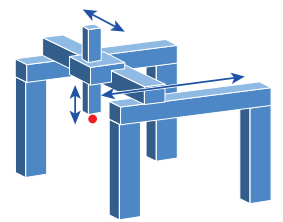
Cantilever CMM



Horizontal CMM



Twin CMM



Gantry CMM



Head types

Fixed

2-axis indexed

2-axis continuous



Probes types

Touch Trigger

Scanning

Optical scanner



Accessories

Rotary Table

Tool Changer

Automation devices

## Improve your 3D measurement process performance up to 100%



Upgrade your software solution to Metrolog X4 and experience new functionalities



Increase CMM's lifespan



Cut the risk of downtime. Reliability



New scope of scanning and optical measuring capabilities



Universal software for all measuring devices



Cost effective alternative solution to new machine purchase

## Transform outdated equipment into a valuable asset



### Efficiency

- Simple installation and quick tuning thanks to its built-in connection to MetroTune software.
- Ethernet connection, embedded servo drives with fast computation.

### Reliable hardware

- Compatible with any CMM.
- Designed to restore CMM overall performance and improve its throughput.
- Operator-friendly.
- Keyboard for better interaction between operator, machine and Metrolog software.

### Optical sensors

- Fully compatible with all sensors, brands and probing systems.
- Integrated with most available Optical Sensors (Nikon, Hexagon, Kreon, Perceptron, Zeiss...).
- Capable of high-speed motion with touch trigger, contact scanning and laser scanning measurements.

## Metrolog X4, Powerful and upgraded software

### Enhanced functions for better results

- Metrolog X4 is designed to quickly process and analyse any size of point clouds.
- Cloud comparison with CAD (Color Mapping).
- Element extraction and automated GD&T.
- Intuitive treatment of Flush and Gap.
- Efficient path programming

### Inspection made easy

- Simplifies complex GD&T analysis
- High performance: large data set (CAD, point clouds, ...)
- Best in class report edition complying with ASME & ISO standard
- A wide range of trainings available to maximize user's capabilities
- Suited for Machining, Die or Sand casting, Moulding, Forming...
- Hotline support and Extranet access

### Innovation

- Driven by innovation, our development team constantly integrate new systems to provide you the ultimate measurement hardware for your existing and upcoming applications
- Major updates & releases each year.



# Experts responding to your needs

## Calibration & services

- CMM Calibration and certification
- Mechanical and electronic maintenance
- Expertise on ALL 3D systems
- Preparation and handling of your CMM to a new location

## Worldwide technical support & maintenance

Our interventions are flexible according to your needs and can be either a maintenance contract (preventive and curative) or a one-time service.

## Quality standards

CMM certification based on Iso 17025 methods regarding laboratory certifications.



## Up to 100 % Restored performance

Retrofit your CMM to retrieve «as new» performances and gain measurement capacity.

Upgrade to Metrolog X4 powerful universal software. pilot retrofitted CMM scanning, probing sensors with a better range of available analysis functions.



## Up to 70 %\* Saving Cost

Control your investment and update to a wider range of possible devices like probing and scanning sensors.

\*Maximum percentage encountered for CNC retrofit.



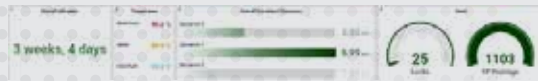
## Multiple Guarantees

2 years of hardware guarantee: parts & manpower.

10 years of Metrologic spare parts and electronic components availability.

Buy security and peace of mind with our yearly maintenance and support contract.

## Added value app's to maximize your productivity



### Monitor ME

**Track CMM state through the controller**  
Thanks to Metrologic's CMM controller, release and get all data to anticipate and improve machine maintenance. A real entry door to the 4.0 industry.



### X4 i-Monitor

**Monitor performance and occupation rate**  
i-Monitor provides key informations based on your license state. Retrieve and use datas, feed your own dashboards or let us built all needed reports taylored for you.



Connected to the right measure

Scan this QR Code to learn more  
[www.metrologic.group/cmm-retrofit](http://www.metrologic.group/cmm-retrofit)



Distributor network: [www.metrologic.group](http://www.metrologic.group)