

## Metrolog X4: 5-axis programming REVOLUTION

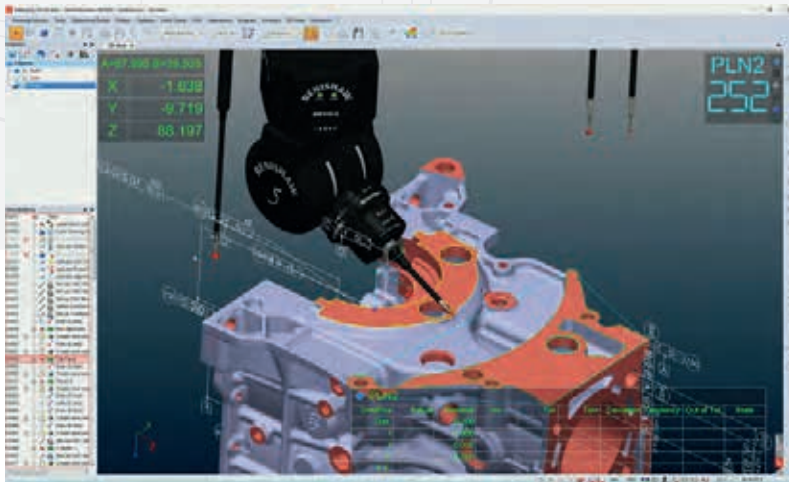
- Fastest REVO programming software available
- Easy to edit
- Graphical reporting
- Program off-line to maximize measurement time on your CMM

# Bring Automated Programming to Your CMM

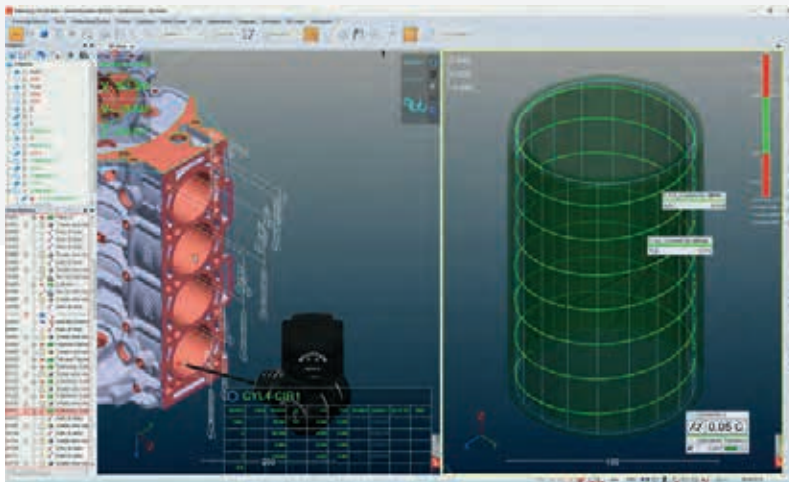
Metrolog X4 is 5-axis oriented, with a modern software architecture, allowing you to manage large sets of data that is well adapted to sweep-scanning.

Create efficient, ready-to-deploy programs on a digital twin with Silma X4 and generate graphical reports for data-driven decisions (i-Viewer). Complex measurement strategy are made easy!

Using Metrolog X4 software for your CMM programming is the best way to save time and costs.



Enhanced user interface for simple, fast and easy programming fulfilling modern programmer expectations.



As simple as a double-click: Edit single or multiple complex measurement strategies all at the same time.



Modern database management



Handles large sets of data

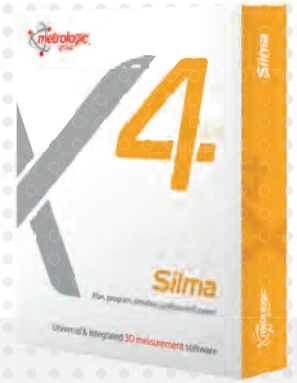


X4 keeps pace with 5-axis development

# Remote programming and safety with Silma's digital twin

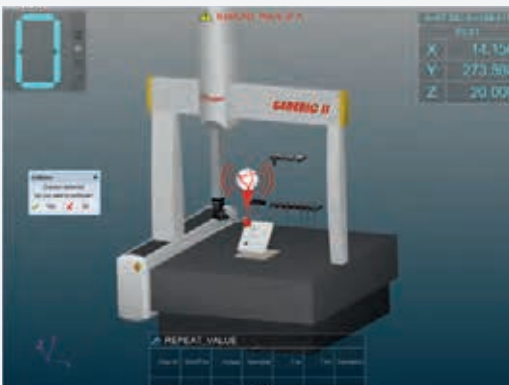
Silma X4, based on all Metrolog X4 functionalities, let's you create a digital twin of your inspection environment allowing safe offline programming.

Working on-site or remotely, reduce or eliminate validation time on your CMM. How? With SILMA's collision detection and automatic clearance-path generation.



## Collision detection & trajectories

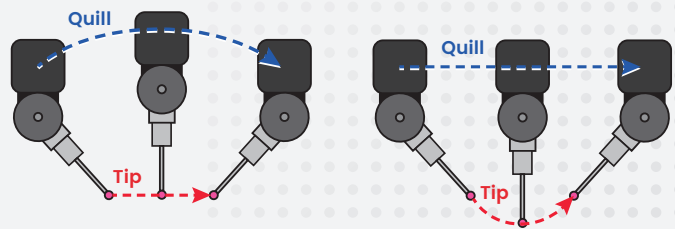
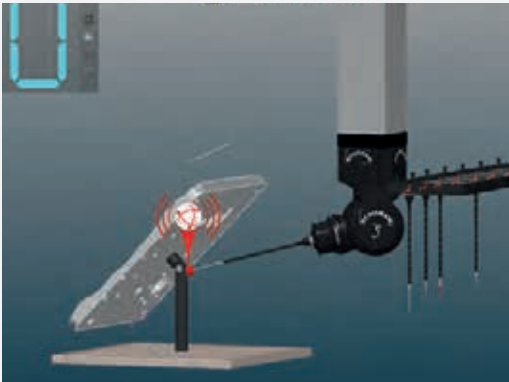
Detect environment



Detect objects or probe racks



Detect fixture objects



Optimize trajectories close to your parts by choosing in between TIP or QUILL translations (Mgprog only)



SETUP TIME reduced:  
No need for part squaring  
on CMM.



RUNTIME increase: only one tool  
calibrated to use in every angle and  
position for common RSP2 probes.

# Powerful report editor and data driven decision with i-Viewer

Visualize inspection results and make decisions with easy-to-read reports. Visualize high quantity of data efficiently through COLOR-MAPPED 3D views.

Share analysis with your team in i-Viewer and experience directly reported/measured results in a 3D view.

## Color mapping on screen and in reports

Live visualization of data from sweep scanning...

...to color mapping the same area on PDF report.



Leading modern Industry 4.0 solution, keeping pace with 5-axis development.



Increase overall CMM runtime, reduce programming duration and save costs!



Silma digital twin: keeps your hardware safe by simulating your environment and avoiding collisions.



Edit powerful reports, drive decisions with i-Viewer and increase the speed of your inspection process.

## Added value app's to maximize your productivity



**i-Viewer**

**Free Metrolog X4 working session viewer app.** Collaborate and dynamically exchange your 3D inspection data with your engineering team, facilitate product development.



**i-Monitor**

**Monitor performance and occupation rate** i-Monitor provides key information based on your license state. Retrieve and use data, feed your own dashboards or let us build all needed reports tailored for you.



Connected to the right measure

Scan this QR Code to learn more  
[www.metrologic.group/5-axis](http://www.metrologic.group/5-axis)



Distributor network: [www.metrologic.group](http://www.metrologic.group)